

TDR SERIES

MANUAL FULL INSERTION CARD READER

Affordable and versatile of smart manual card reader



MS



IC

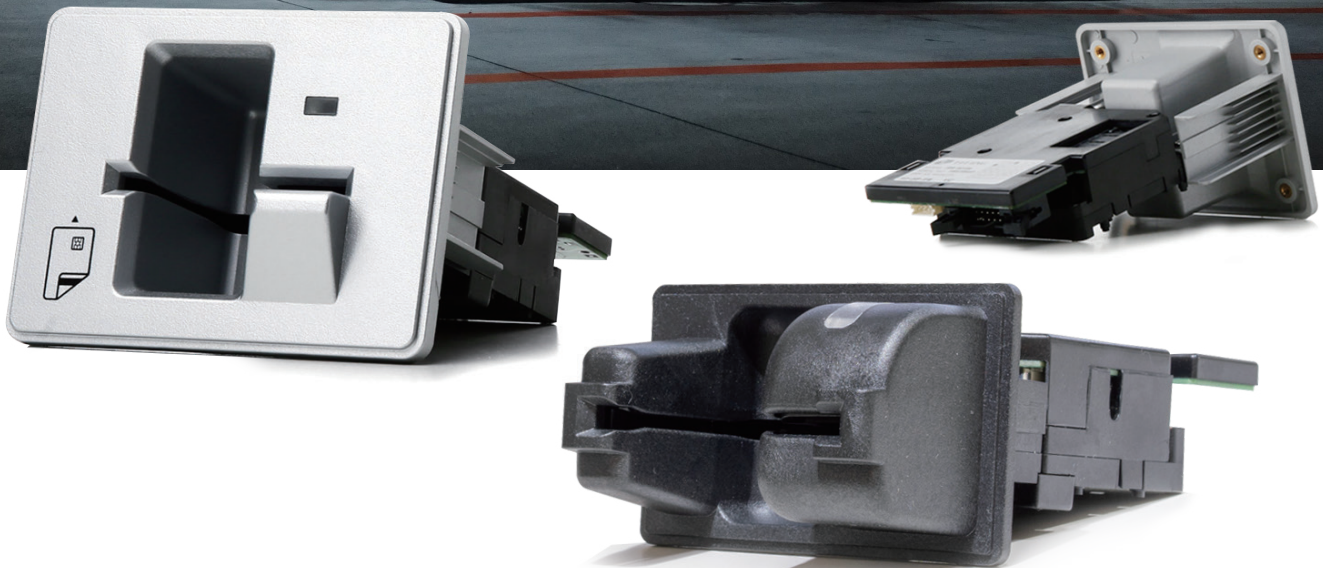


RF

- TDR series deliver stable reading performance with mechanical shutter and locking function.
- Provides multiple bezel and interface options to meet various user environments.
- Standard encoding function - Mag.Stripe, IC Contact and RF Contactless(optional)

APPLICATION

- ATM/CD
- Vending machine
- Fare collection system
- Payment terminal
- Kiosk machine
- Parking system



FEATURES

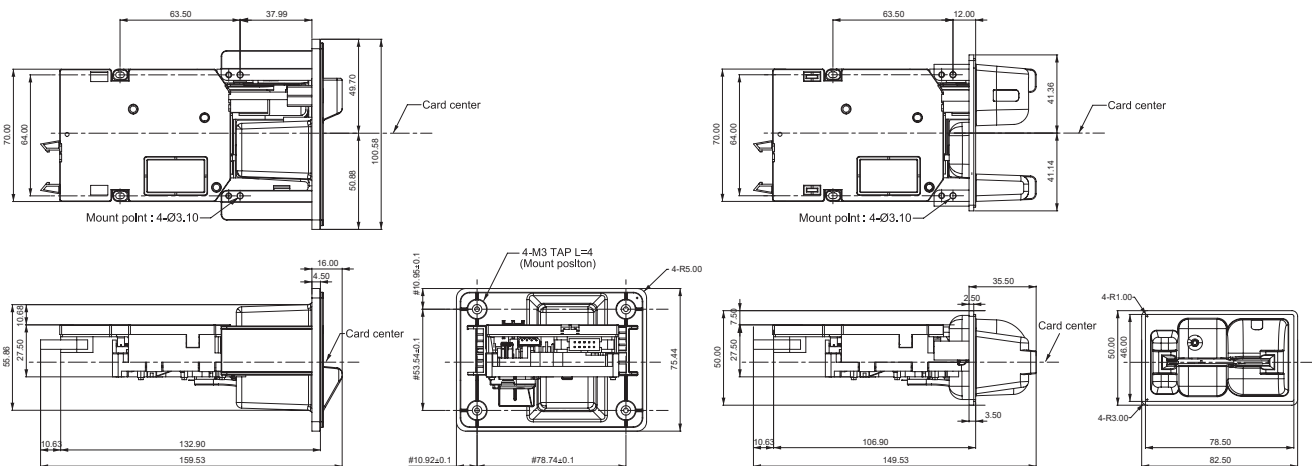
- Magnetic ISO 1/2/3 track read
- IC card ISO 7816-1/2/3 read/write
- Mag.Stripe (Read), IC Contact, RF Contactless(option)
- Data encryption with triple DES and single DES
- Security function to prevent card full-out during transaction
- RS232C or USB interface
- EMV Level 1 & 2 certified
- Full shutter preventing dust and any foreign objects (optional)
- Flat or round bezel

TDR SERIES MANUAL FULL INSERTION CARD READER

TECHNICAL SPECIFICATIONS

ITEM	SUB ITEM	DESCRIPTION
Magnetic stripe (Read only)		ISO7811(Track 1,2,3)
		Coercivity: HiCo / LoCo
IC Contact smart card		ISO 7816
		T=0, T=1 protocol
		EMV Level 1, EMV Level 2(Payment Offline)
RF Contactless smart card (optional)		ISO 14443 A/B, Mifare, Desfire, NFC, Felica (PC/SC or Serial)
		*Other types available upon request
Card Speed		100~1000mm/s capability (at flat card)
Interface		RS232C or USB
Power		+12Vdc ±10%, 2A over
Life time	Unit	300,000 cycle
	Magnetic Stripe Head	250,000 cycle
	Smart Card Contact	1,000,000 contacts
User Friendly Operation		Possibility to receive a feedback from the card reader about the status
		Possibility to update by remote the firmware of the card reader
Approval		TQM
Temperature	Operating	0~50°C
	Storage	-20~70°C
Humidity	Operating	5 ~ 90RH
	Storage	0 ~ 90RH
Dimension	Round Bezel	82.5mm (W) X149.53mm (L) X 50mm (H)
	Flat Bezel	100.58mm (W) X159.53mm (L) X 75.44mm (H)
Weight		Less than 200g

Specifications are subject change without notice



TDR - ■ ■ ■ ■ ■

ID	Interface	Mag.					IC, SAM			RF	Inlet		
		NO.	ISO1	ISO2	ISO3	Life time	NO.	IC	SAM		Code	Dip	Description
D : Dip Type	R : RS-232C U : USB	2	R	R	R	50	1	O	1	0 : Non-RF 1 : RF	R	Round	Round Type Bezel
							4	O	4		F	Flat-B	Flat Type Bezel(Black)
		3	X	0	S	Flat-S	Flat(Silk&Silver Printing)						
					4	O	0	N	None		None Bezel		